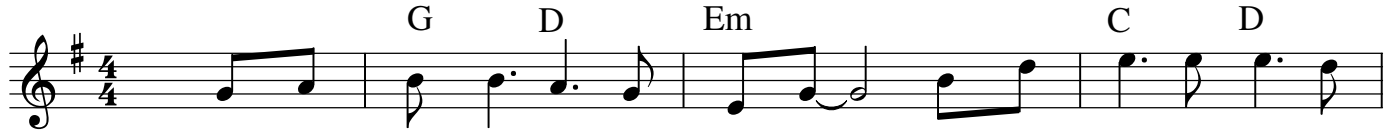


Wild Mountain Thyme

Will ye go, Lassie go ?

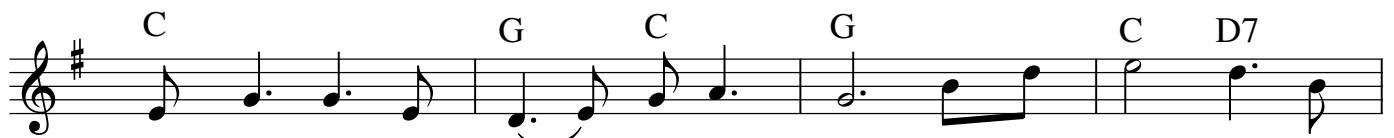
Traditional from Northern Ireland
Notation: Robert Hausler, 2005



Oh, the sum - mer time is come - ing - and the trees are sweet - ly
I will build my love a to - wer - near yon pure - crys - tal
If my true love she were go - ne - , I would sure - ley find a -



bloom - ing - and the wild moun - tain thyme - - grows a - round the bloom - ing
foun - tain - and on it I will pile - - all the flo - wers of the
no - ther, where - wild moun - tain thyme - - grows a - round the bloom - ing



heath - er, will ye go, - las - sie go?
moun - tain, will ye go, - las - sie go? And well all go to -
hea - ther, will ye go, - las - sie go?



geth - er - to pluck wild moun - tain thyme - - all a -



round the bloom - ing heath - er, will ye go. - las - sie go?